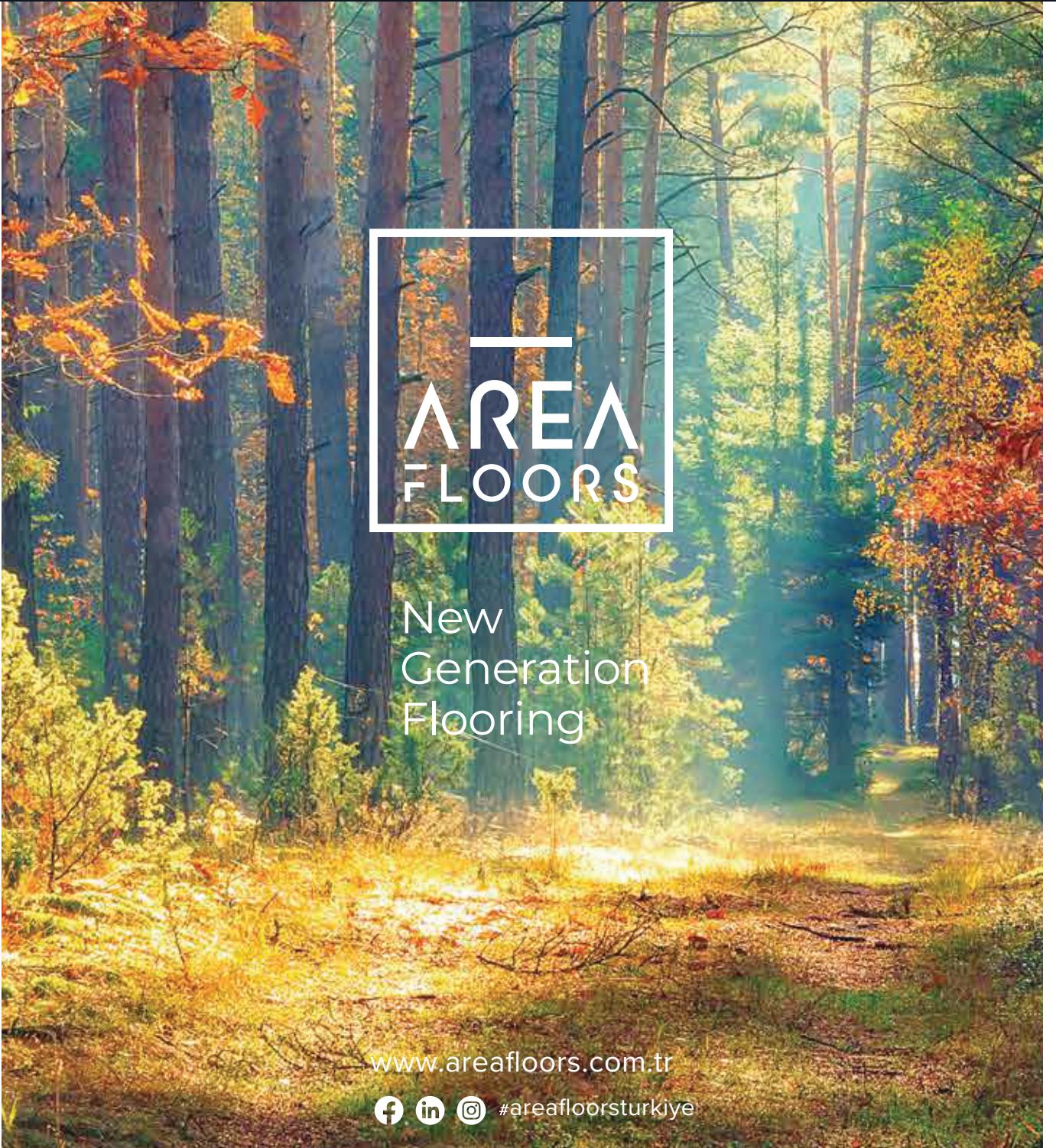


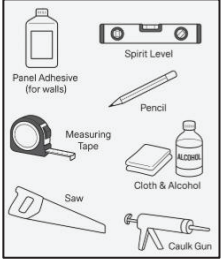
a touch of mother nature



New
Generation
Flooring

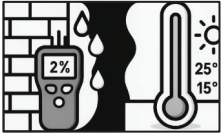
www.areafloors.com.tr

   #areafloorsturkiye



1 PREPARATION TOOLS

- Spirit Level
- Measuring Tape
- Pencil
- Saw
- Caulk Gun
- Cloth & Alcohol
- Panel Adhesive



2 PREPARATION THE ROOM

2.1 Requirements

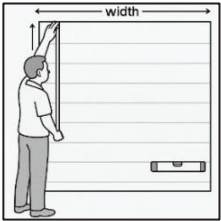
The moisture content of the wall should not be higher than 2%, otherwise, dehumidification should be carried out or appropriate moisture-proof measures should be taken.

The room temperature should preferably be between 15°C and 25°C for 24 hours before, during, and after installation.



2.2 Clean the Wall Surface

- Ensure the wall is dry, dust-free, and clean of grease or glue residue.
- Wipe the wall with a damp cloth or mild cleaner.
- Check for flatness using a spirit level. Sand down or fill uneven areas.
- Vacuum the surface to remove all dust.



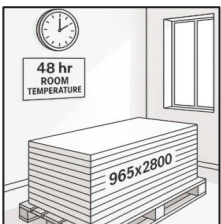
2.3 Calculate Area & Layout

- Measure height × width of the wall. Add 5–10% for cutting waste.



2.4 Calculate Number of Columns

- Divide the room width by the panel width.
- Divide the excess space equally between the first and last columns (each panel should be at least 5 cm).
- Use a pencil and spirit level to draw a straight line at the beginning of each column.



2.5 Preparing the Tiles

- Leave panels in their box at room temperature for 48 hours.
- Check for damage before installation.

3 INSTALLATION INSTRUCTIONS

3.1 Columns Direction and Pattern

- It is positioned perpendicular to the wall.

3.2 Starting Column

- Apply the adhesive in a zigzag pattern on the back of the first panel.
- Glue the panel perpendicular to the far left of the wall.
- Use a level to make sure it is level.

3.3 Next Column Installation

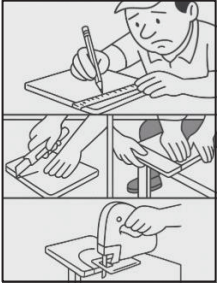
- Continue placing the next panels side by side in sequence and apply glue to each one. Then press them against the wall.



4 CUTTING & TRIMMING

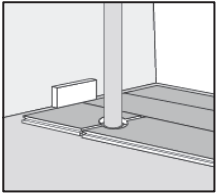
4.1 Panels Cutting

- Measure and mark the cutting line.
- For straight cuts:
 - Cut the panel with a sharp concave cutter knife. Always cut with the design facing upwards.
 - Lay the panel with the design facing downwards. Snap the plank in two. Use your knees to hold the panel.
- For shaped cuts:
 - Use jigsaw, saber saw, or handsaw as appropriate.



4.2 Around Pipes

- Join two tiles at the pipe center.
- Drill a hole 20 mm larger than the pipe diameter.



5 FINAL STEPS

After installation is complete, wipe the surface clean with a damp cloth.

6 THE RECOMMENDED ADHESIVE

- For SPC wall panel installation, use a solvent-free, MS polymer-based adhesive with the following properties:
 - Strong initial tack and elastic bonding,
 - Non-sag for vertical application,
 - Moisture-resistant and suitable for humid areas,
 - Low-emission, certified for indoor air quality,
 - Temperature stable between -40 °C and +90 °C.

